



mPR α Polyclonal Antibody

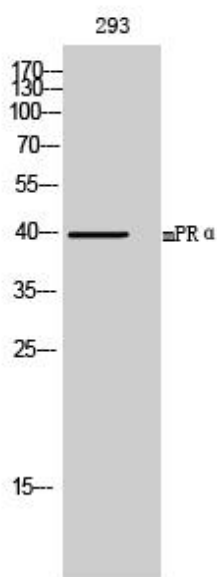
Catalog No	YP-Ab-03316
Isotype	IgG
Reactivity	Human;Rat;Mouse;
Applications	WB;IHC
Gene Name	PAQR7
Protein Name	Membrane progesterin receptor alpha
Immunogen	The antiserum was produced against synthesized peptide derived from human MPRA. AA range:297-346
Specificity	mPR α Polyclonal Antibody detects endogenous levels of mPR α protein.
Formulation	Liquid in PBS containing 50% glycerol, 0.5% BSA and 0.02% sodium azide.
Source	Polyclonal, Rabbit,IgG
Purification	The antibody was affinity-purified from rabbit antiserum by affinity-chromatography using epitope-specific immunogen.
Dilution	WB 1:500-2000;IHC-p 1:50-300
Concentration	1 mg/ml
Purity	≥90%
Storage Stability	-20°C/1 year
Synonyms	PAQR7; MRPA; Membrane progesterin receptor alpha; mPR alpha; Progesterin and adipoQ receptor family member 7; Progesterin and adipoQ receptor family member VII
Observed Band	40kD
Cell Pathway	Cell membrane ; Multi-pass membrane protein .
Tissue Specificity	Expressed in a wide range of tissues including ovary, testis, placenta, uterus and bladder.
Function	function:Steroid membrane receptor. Binds progesterone in vitro. May be involved in oocyte maturation.,similarity:Belongs to the ADIPOR family.,tissue specificity:Expressed in ovary, testis, placenta, uterus and bladder.,
Background	function:Steroid membrane receptor. Binds progesterone in vitro. May be involved in oocyte maturation.,similarity:Belongs to the ADIPOR family.,tissue specificity:Expressed in ovary, testis, placenta, uterus and bladder.,
matters needing attention	Avoid repeated freezing and thawing!



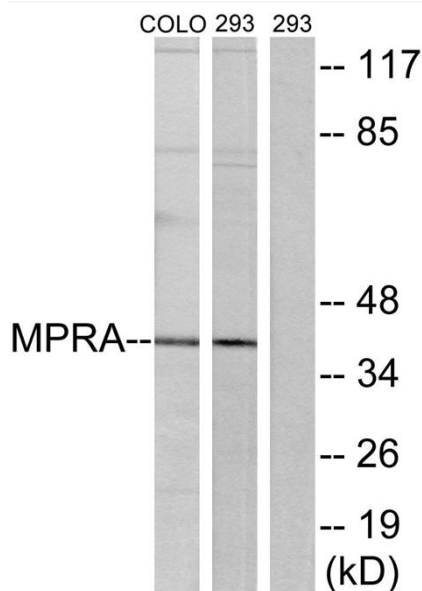
Usage suggestions

This product can be used in immunological reaction related experiments. For more information, please consult technical personnel.

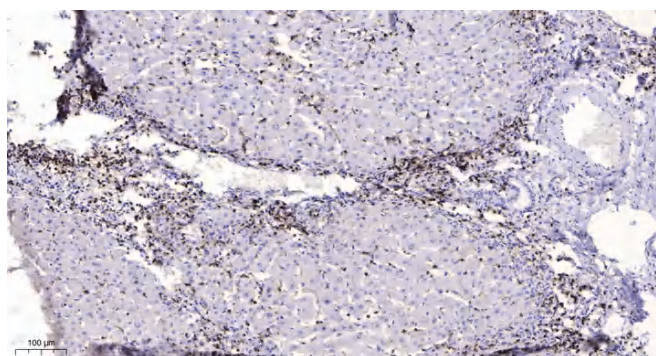
Products Images



Western Blot analysis of 293 cells using mPR α Polyclonal Antibody



Western blot analysis of lysates from 293 and COLO cells, using MPRA Antibody. The lane on the right is blocked with the synthesized peptide.



Immunohistochemical analysis of paraffin-embedded human liver cancer. 1, Antibody was diluted at 1:200(4° overnight). 2, Tris-EDTA,pH9.0 was used for antigen retrieval. 3,Secondary antibody was diluted at 1:200(room temperature, 45min).